

DRA Series

## DRA1332



## 13.3" Commercial Transformer System Android Mini Kiosk



- 13.3" TFT LCD w/PCAP Touch
- Rock Chip ARM Cortex A55 RK3568 Quad-Core 2.0GHz CPU
- Support Thermal Printer Stand
- Adjustable Tilt Angles for Display
- Support LED Light Bar (Optional)
- Support NFC Reader, MSR Reader, Barcode Reader

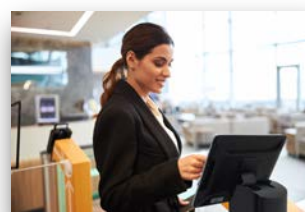
(Optional)



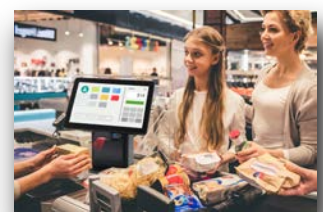
Restaurant Ordering



Queuing System



Self Check-In System



Price Checking

## Specification

## DRA1332

## Display

Display Type	13.3" TFT LCD
Resolution	1920x1080
Brightness	250 nits
Touch Panel	10 Points Projected Capacitive Touch Panel

## Main System

CPU	Rock Chip ARM Cortex A55 RK3568 Quad-Core 2.0GHz CPU (Optional: RK3399)
Memory	4GB LPDDR4
Storage	16GB eMMC
GPU	Mali-G52
Expansion	1 x SD Card (SDHC Class10 Compatible)
OS Support	Android 12 (Optional Android 13)
Function Support	WLAN: 802.11 b/g/n Module Bluetooth 4.2
I/O Ports	1 x USB Type A 2.0 1 x Micro SD Card Slot 1 x Micro USB 2.0 1 x LAN Port (Optional PoE Function) 1 x Mini HDMI 3 x Pogo Pin (Left, Right, Bottom)
Stand I/O Ports	2 x RS232 RJ45 Type 1 x LAN Port 2 x USB Type A 2.0 1 x RJ11 (Support 12V/24V) 1 x 24V DC-In

## Physical

Housing	ABS+PC
System indicators	1 x Power LED
Physical Button	1 x Power Button, 5 x Function Key
Speaker	2 x 2W
Power Adapter	DC 24V/2.5A
Power Input	AC 100-240 Vac
Ventilation	Fanless
Camera	Front: 2M WebCam (Optional)
Thermal Printer	Method: Thermal Line Speed: Approx. 170 mm/s Paper: Singly-ply Thermal Paper Roll Roll Size: 79.5 ± 0.5 (W) x 70 mm (Diameter Max.) Thickness 0.05 - 0.06 mm Roll Size: 57.5 ± 0.5 (W) x 70 mm (Diameter Max.) Thickness 0.05 - 0.06 mm (Optional)
Data Collection	NFC Reader (Optional) MRS Reader (Optional) Barcode Scanner Module (Optional)
Standard Accessory	Power Adapter Paper Roll Guide
Product Dimension	335 x 150 x 330 mm
Product Weight	3.5kg
Box Dimension	410 x 300 x 450 mm
Box Weight	5.7kg

## Environment

Certification	CE, FCC
Operating Temperature	0°C - 40°C
Storage Temperature	-10°C - 55°C
Relative humidity	10% - 70% RH (Non-Condensing)

## Overview



## Accessories (Optional)

AWCSNFC  
NFC readerAWCSMSR  
MSR ModuleAWCS2DS  
Barcode scannerAWCSLED  
Light Bar

7" Second Display



10.1" Second Display